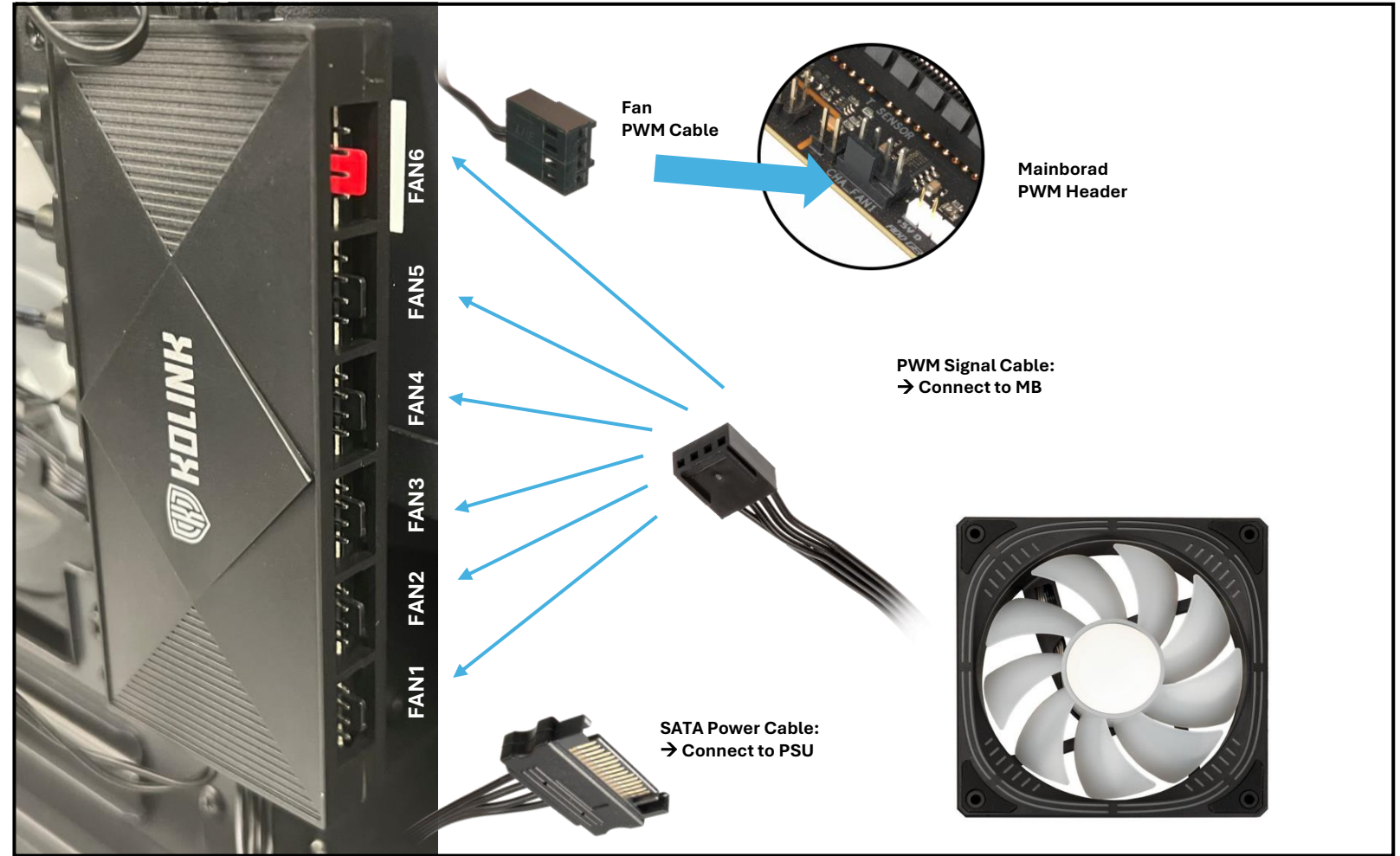


ARGB INSTALLATION MANUAL



Included in the package: ARGB fan hub controller, remote control.

Power Connection

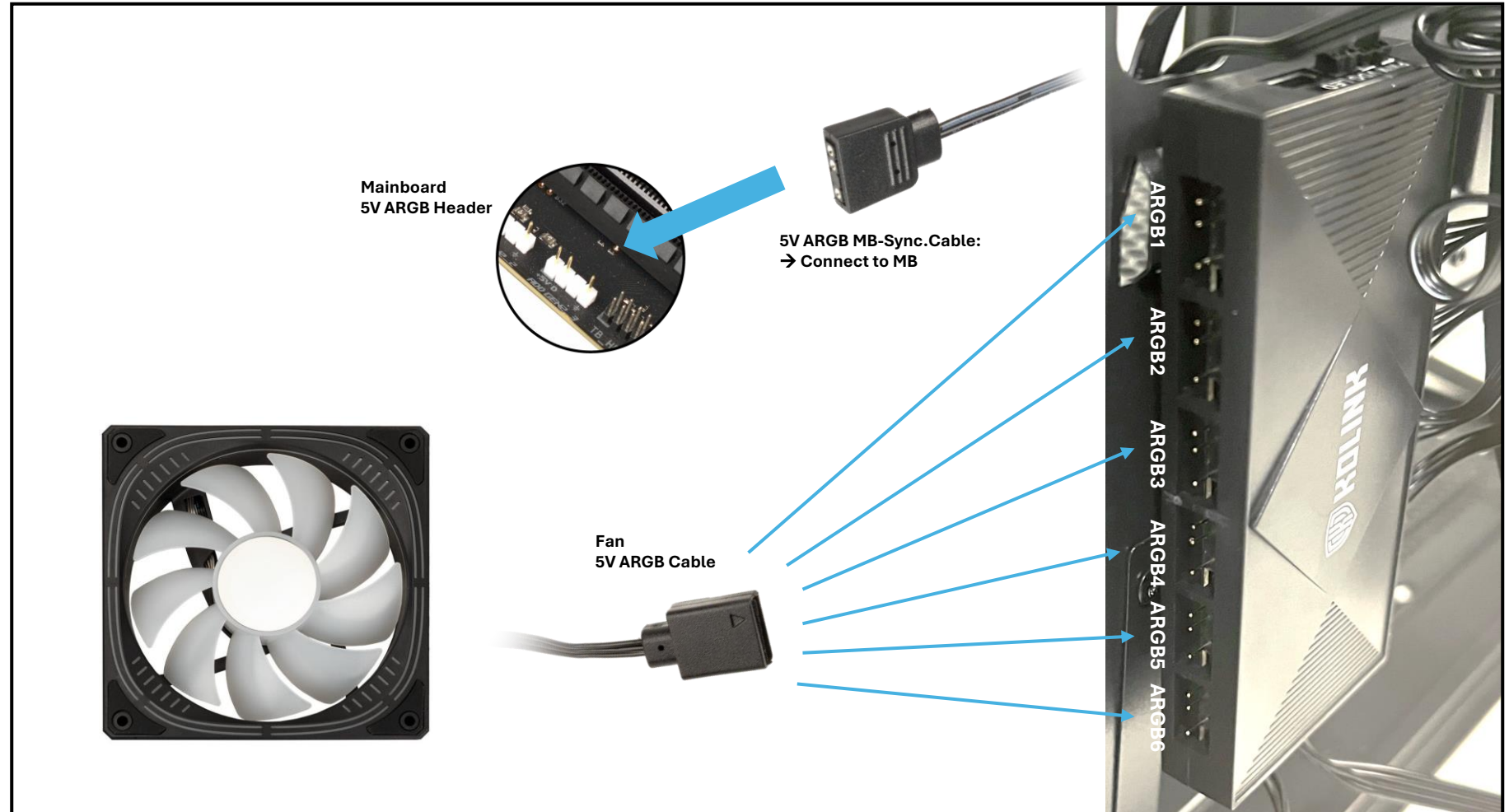


Connect up to 6 fans to the ARGB fan hub controller. 4 fans are pre-installed. Connect additional fans to the free PWM headers. Connect the PWM signal cable to a free mainboard PWM fan header (e.g. CHA_FAN1) to control the fan speed via the mainboard. Connect the SATA power cable to a free SATA power connection on your PSU.

Note: Only use the PWM headers of the ARGB fan hub controller to control fans. AIO pumps require PWM headers with constant 12V from your mainboard.

ARGB INSTALLATION MANUAL

ARGB Connection



Connect up to 6 ARGB devices to the ARGB fan hub controller. 4 fans are pre-installed. Connect additional ARGB devices to the free headers. Connect the 5V ARGB MB sync. cable to the mainboard 5V ARGB header to control the lighting via the mainboard.

Note: The controller only supports 5V ARGB (5V/Data/-/GND) devices. Please check the manual of your mainboard for supported connectors.

ARGB INSTALLATION MANUAL

Remote Control Functions

