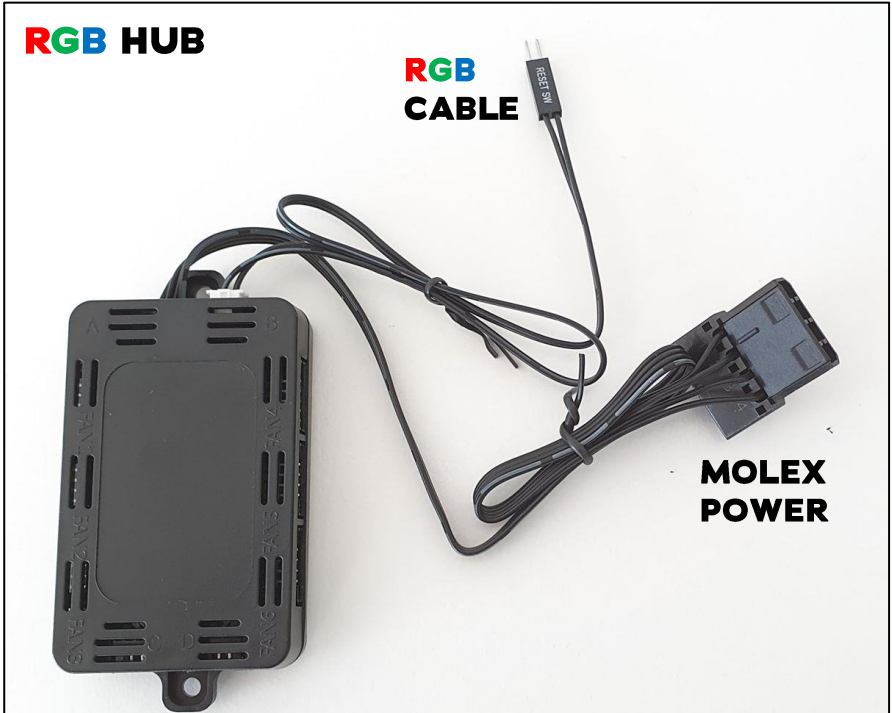
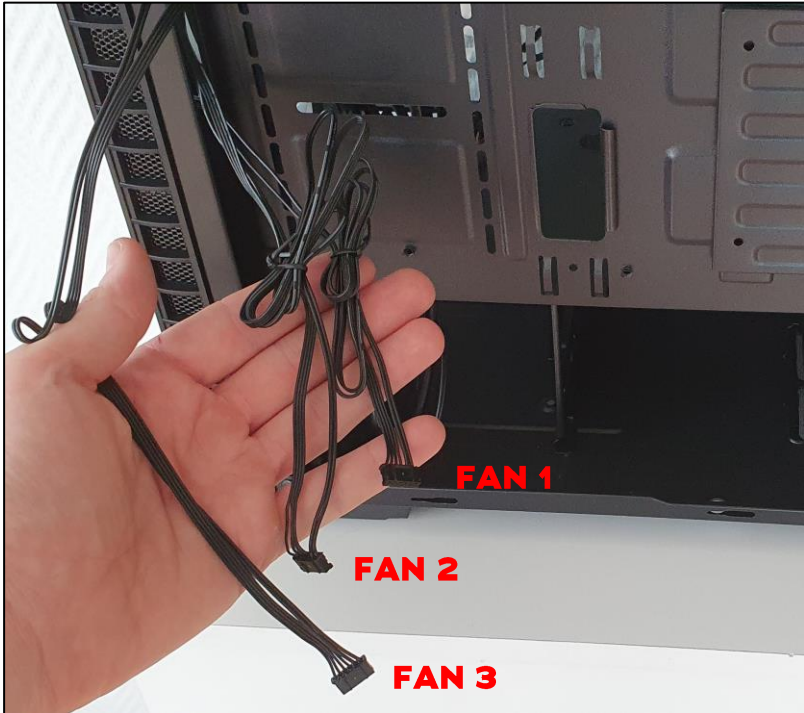
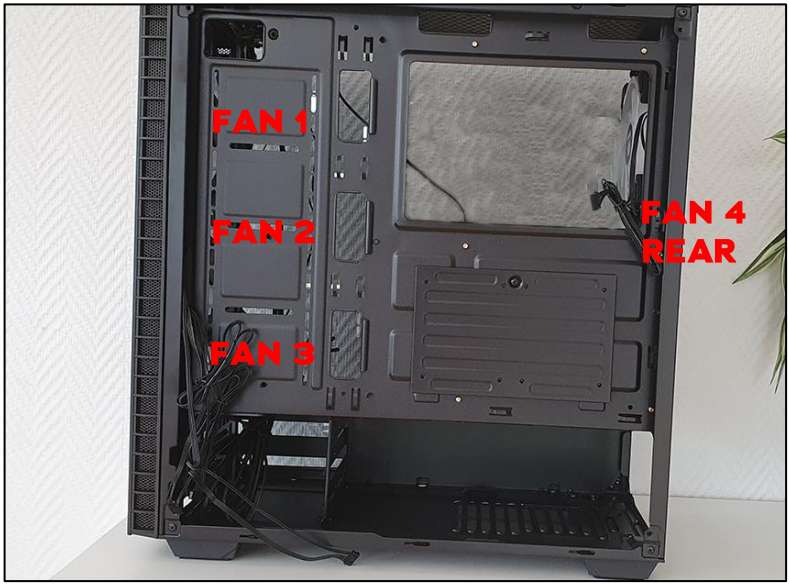




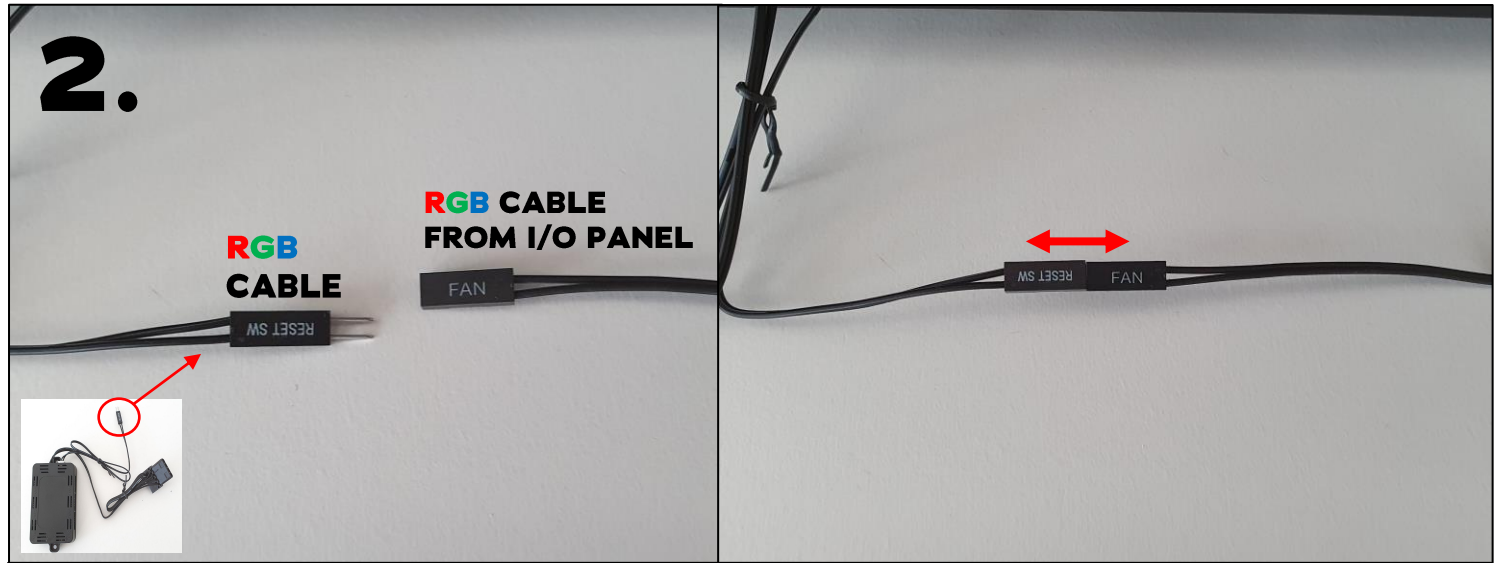
OBSERVATORY FAN & RGB CONNECTION

[WEBSITE](#)

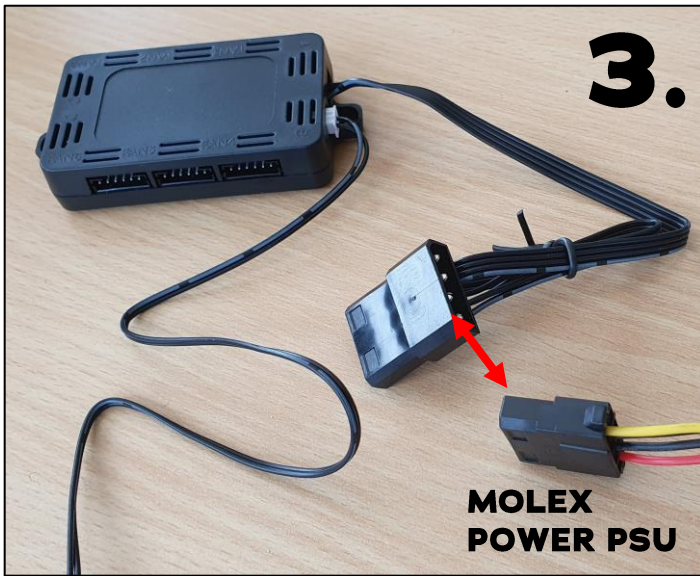




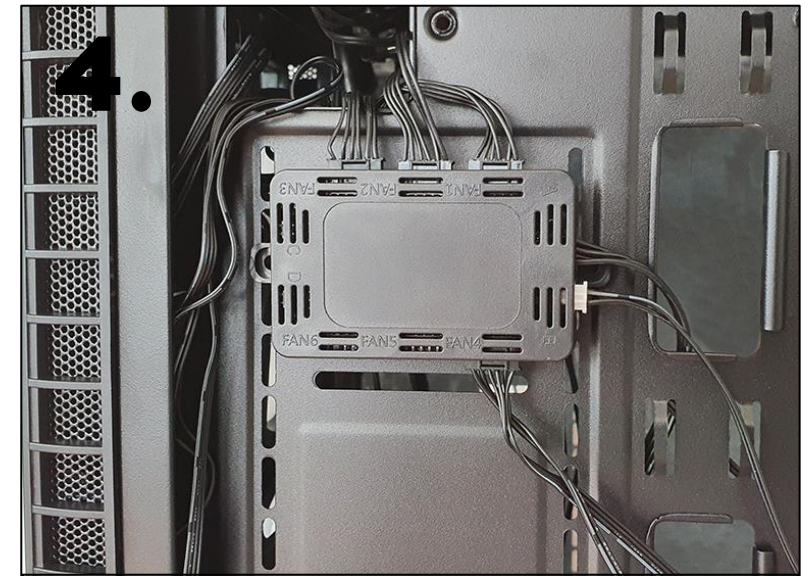
1. Connect fan cables to RGB HUB accordingly. Numbers are visible on the HUB for assistants.



2. Connect RGB Cable from controller to the RGB cable from the I/O Panel



3. Connect the Molex Power from the controller to your PSU



4. Attach HUB accordingly